

The logo features the word "Matrix" in a white, cursive script font, positioned above the word "FIFE" in a white, sans-serif, all-caps font. Both are set against a red background that is part of a larger square graphic. A white, jagged line resembling a zipper or a stylized wave starts from the bottom left of the red square and extends across the page.

Matrix  
FIFE

QUALITY, COMFORT, CHOICE AND STYLE ...

# The Spey Chair

The Spey Chair, hand crafted, the standard specifications are as follows:

## *Frame:*

Fully seasoned Ash, from managed sources hand crafted with triple or double doweled joints, glued and screwed with corner blocks for extra rigidity. Finished using a urethane/acrylic resin composite, water based clear varnish, and hand polished to a deep gloss.

## *Seat:*

Fully upholstered with high density, fire retardant foam pad, supported in solid base, allowing 50 mm of adjustment.

## *Back:*

Fully upholstered with fire retardant foam pad and tempered with a combination of rubber and elastic belting for extra lumber support.

## *Optional:*

Wings on chair back fire retardant.



QUALITY, COMFORT, CHOICE AND STYLE ...

# The Spey Chair

The Spey Chair, hand crafted, the standard specifications are as follows:

OVERALL WIDTH: 647 mm

OVERALL HEIGHT: 1130 mm

OVERALL DEPTH: 698 mm

SEAT WIDTH: 490 mm

SEAT HEIGHT: 470 +/- 25 mm

SEAT DEPTH: 490 mm

ARM HEIGHT: 610 mm

All dimensions are in millimetres and are approximate.

QUALITY, COMFORT, CHOICE AND STYLE ...

## The Lomond Chair

This chair is designed to give superb comfort, incorporating an elegant and timeless design, making a statement in any surroundings. Crafted with an eye for detail using quality fabrics to give the characteristic elegant tub shape.

### *Frame:*

Made from a light, but strong, African "Obeche" hardwood.

Hand crafted and utilising a combination of triple dowelled and multi nailed joints. Each component is cut to fit within fine tolerances glued with resin basal adhesive, forming a bond stronger than the wood itself. Corner blacks are used for extra rigidity.

### *Seat:*

Fully upholstered with high density fire retardant foam pad supported on lattice of elastic belting.

### *Back/Sides:*

Fully upholstered with high density fire retardant foam tempered with elastic belting.

### *Showood:*

Legs finished with four coats of urethane/acrylic composite resin, water based clear varnish and hand polished to deep gloss.



QUALITY, COMFORT, CHOICE AND STYLE ...

## The Lomond Chair

The Lomond Chair, hand crafted, the standard specifications are as follows:

OVERALL WIDTH:	711 mm
OVERALL HEIGHT:	813 mm
OVERALL DEPTH:	635 mm
SEAT WIDTH:	457 mm
SEAT HEIGHT:	470 mm
SEAT DEPTH:	470 mm
ARM HEIGHT:	470 mm

All dimensions are in millimetres and are approximate.

QUALITY, COMFORT, CHOICE AND STYLE ...

## The Morcer Footstool

A complimentary addition to match any of our chairs. All the products have been designed to compliment each other and are available individually or as a full set.

### *Frame:*

Fully seasoned Ash, from managed source and 18mm WBP Mahogany Ply. Hand crafted and utilising both triple dowelled and biscuit joint techniques. Legs are finished using urethane/ acrylic resin, water based clear varnish and hand polished to a deep gloss.

### *Upholstery:*

Solid base fully upholstered with fire retardant foam padding and choice of fabric.

## The Morcer Footstool

The Morar Footstool, hand crafted, the standard specifications are as follows:

OVERALL WIDTH: 530 mm

OVERALL HEIGHT: 430 mm

OVERALL DEPTH: 390 mm

(Height can be specifically suited to you needs on request)

All dimensions are in millimetres and are approximate.

# The Deveron Table Set

Traditionally crafted versatile tables with a highly polished ash finish that enhances the natural grain of wood. These tables come in sets of 3 or 4.

## *Frame:*

Fully seasoned Ash from managed source. Hand crafted with triple dowelled joints and bonded with resin glue. Finished using a urethane/acrylic resin composite, water based clear varnish, and hand polished to a deep gloss.

## *Tops:*

Cut from Beech faced composite sheets. Bonded to frame using resin glue and biscuit jointing techniques. Finished using a urethane/acrylic resin composite, water based clear varnish, and hand polished to a deep gloss.



QUALITY, COMFORT, CHOICE AND STYLE ...

# The Deveron Table Set

The Deveron Table Set, hand crafted, the standard specifications are as follows:

	Width	Depth	Height
LARGE TABLE:	570	525	560
MEDIUM LARGE:	530	525	515
MEDIUM SMALL:	470	525	470
SMALL:	420	525	425

All dimensions are in millimetres and are approximate.

QUALITY, COMFORT, CHOICE AND STYLE ...

# The Lindores Chair

Specially designed with children in mind, this chair was constructed with a strong framework to withstand the rough and tumble of 3 to 7 year olds.

This chair will give your children or grandchildren years of enjoyment.

## *Frame:*

The frame carcass is made up from 18mm WBP Far Eastern Mahogany plywood. Each joint is glued with resin based adhesive and secured.

## *Upholstery:*

The whole carcass is upholstered with high density fire retardant foam supported on lattice elastic belting. A wide choice of fabrics and colours are available.

## *Hardware:*

Swivel castors are fitted.



QUALITY, COMFORT, CHOICE AND STYLE ...

# The Lindores Chair

The Lindores Chair, hand crafted, the standard specifications are as follows:

OVERALL WIDTH:	575mm
OVERALL DEPTH:	575mm
OVERALL HEIGHT:	550mm
SEAT HEIGHT:	240mm

All dimensions are in millimetres and are approximate.

QUALITY, COMFORT, CHOICE AND STYLE ...

# The Rannoch Radiator Covers

Radiator Covers are safe, stylish and made to measure, giving the perfect finishing touch to any room.

## *Construction:*

Our covers are made from steamed Beech faced 19mm MDF. The cover incorporates a removable front cover with 6mm 'Helsinki' pattern panels. Each component is cut to fit within fine tolerances, glued with resin based adhesive and biscuit jointed, forming binds stronger than the wood itself. Metal brackets are used for extra rigidity.

## *Finish:*

Each cover is finished with four coats of urethane/acrylic, water based clear varnish and hand polished to a deep gloss.



QUALITY, COMFORT, CHOICE AND STYLE ...

# The Rannoch Radiator Covers

The Rannoch Radiator Covers, custom made to specific dimensions, the dimensions are to your requirements:

QUALITY, COMFORT, CHOICE AND STYLE ...

# The Strathbeg Range

Distinctive lifestyle storage that are robust, durable and hygienic with easy wipe surfaces. The Units are free-standing offering maximum storage, and the range consists of a wide variety of units to compliment any size of room.

## *Joints:*

The joints are glued using resin based adhesives and incorporate, 'biscuit' jointing techniques.

## *Hardware:*

Doors are hinged with 270 degree opening hinges. Drawers are supported on roller guides.

## *Finish:*

The furniture range has a pre-finished surface in the Formica. The edges are sealed with four coats of water based clear varnish and hand polished to a deep gloss.



QUALITY, COMFORT, CHOICE AND STYLE ...

# The Strathbeg Range

The Strathbeg furniture range is made up from 16mm sheets of MDF, Formica bonded to both sides.

The standard specifications are as follows:

THE DESK:	Height 750 mm	Length 800 mm	Depth 500 mm
WARDROBE UNIT:	Height 1400 mm	Length 500 mm	Depth 500 mm
TALL DRAWER UNIT:	Height 1400 mm	Length 600 mm	Depth 500 mm
TALL STORAGE UNIT:	Height 1400 mm	Length 600 mm	Depth 500 mm
LOW STORAGE UNIT:	Height 750 mm	Length 800 mm	Depth 500 mm
BEDSIDE CABINET:	Height 600 mm	Length 400 mm	Depth 400 mm

All dimensions are in millimetres  
and are approximate.

QUALITY, COMFORT, CHOICE AND STYLE ...

# The Waste Management Unit / Catering Trolleys

The Waste Management Unit is a favourite with schools and nurseries. They are a practical and hygienic way of separating foods, utensils or rubbish and are ideal for any busy catering environment.

## *Joints:*

The joints are glued using resin based adhesive and incorporate 'biscuit' jointing techniques.

## *Hardware:*

Handles are 15mm diameter 'D' style, coloured red. Castors are either 75mm of 50mm made from steel with rubber wheels, with a braking mechanism incorporated. The castors are fixed by bolts to the base of the unit. Doors are hinged with 180 degrees opening hinges.

## *Finish:*

The units have a pre-finished surface in the Formica laminate which is 'Crocus Yellow' in colour. The edges are sealed with four coats of water based clear varnish and hand polished to a deep gloss.



QUALITY, COMFORT, CHOICE AND STYLE ...

# The Waste Management Unit / Catering Trolleys

The units are made from 16mm sheets of MDF with Formica laminate bonded to both sides. The standard specifications are as follows:

## WASTE UNIT:

OVERALL WIDTH: 1500 mm

OVERALL HEIGHT: 890 (75mm castors) mm

855 (50mm castors) mm

OVERALL DEPTH: 400 mm

## SALAD BAR:

OVERALL WIDTH: 1146 mm

OVERALL HEIGHT: 890 mm (75 mm castors)

855 mm (50 mm castors)

OVERALL DEPTH: 400 mm

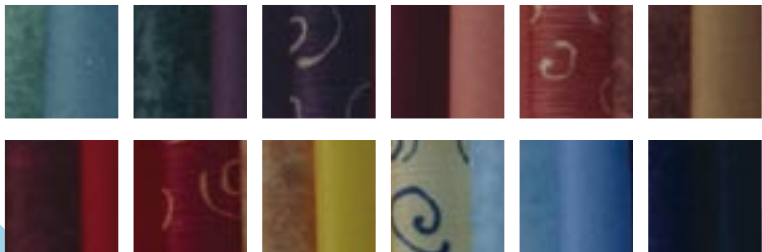
All dimensions are in millimetres and are approximate.

QUALITY, COMFORT, CHOICE AND STYLE ...

## Soft Furnishings

Stylish, elegant curtains, cushions & bedding sets available in a range of patterns, texture and colour to suit every environment.

Specially chosen fabrics can be accessorised with cushions, tie-backs and pelmets.



QUALITY, COMFORT, CHOICE AND STYLE ...

## Soft Furnishings

Stylish, elegant curtains, cushions & bedding sets available in a range of patterns, texture and colour to suit every environment.

Specially chosen fabrics can be accessorised with cushions, tie-backs and pelmets.

QUALITY, COMFORT, CHOICE AND STYLE ...



## Upholstery

Refresh your favourite pieces of furniture by giving them a new lease of life with a range of quality stylish fabrics.



QUALITY, COMFORT, CHOICE AND STYLE ...

## Upholstery

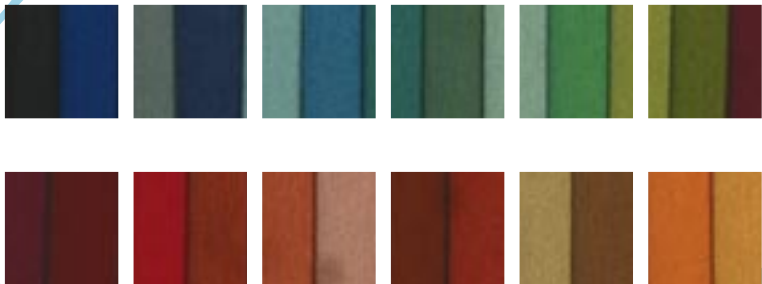
Refresh your favourite pieces of furniture by giving them a new lease of life with a range of quality stylish fabrics.

QUALITY, COMFORT, CHOICE AND STYLE ...



## *Pew Cushions*

Comfortable, durable and attractive pew cushions, for your church, in a wide variety of colours, made to measure using the highest quality material.



QUALITY, COMFORT, CHOICE AND STYLE ...

## *Pew Cushions*

Comfortable, durable and attractive pew cushions, for your church, in a wide variety of colours, made to measure using the highest quality material.

QUALITY, COMFORT, CHOICE AND STYLE ...

# Contact Us For a Quote:

Matrix Fife

Block 14

Holden Way

Donbristle Industrial Estate

Dalgety Bay

KY11 9JQ



QUALITY, COMFORT, CHOICE AND STYLE ...